

APPENDIX C. INSTALLING THE MINI LOGSET

1. Remove the glass and five wrapped logs from the firebox. Note that each log is numbered on one end. The numbered end will always be facing the rear of the firebox.
2. The “ember bed - burner plate” need not be removed unless to adjust the air shutter.
3. Position Log #1 by inserting the pins into the leftmost holes in the ember bed. A properly positioned log will look like the Photo #1 to the right.
4. Now find log “2”. It also had 2 pins on the bottom. Position Log #2 in the two holes to the right of the ember bed as indicated in Photo #2 at right..
5. As above, find the holes on the right side on the ember bed that will allow the log to be positioned as below.
6. Position log 3 as shown at right (Photo #3) being careful to get the placement just right. **Failure to do so will cause an ugly flame pattern and possible sooting.**
7. Position log “4” as shown below making sure the back of the log is even with the back and left edges of the ember bed and the log front is resting on log “3”.
8. Position log “5” as shown below making sure the back of the log rests on the rear and side of the ember bed and the front is elevated.
9. Make sure that you don't see any log numbers from the front. If you do, the log is backwards.



Photo #1: position of Log #1

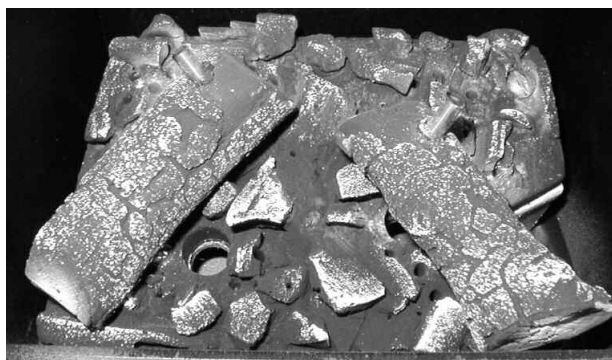


Photo #2: position of Log #2

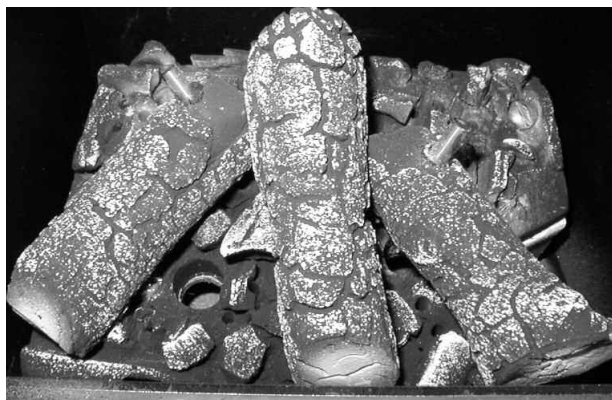


Photo #3: position of Log #3

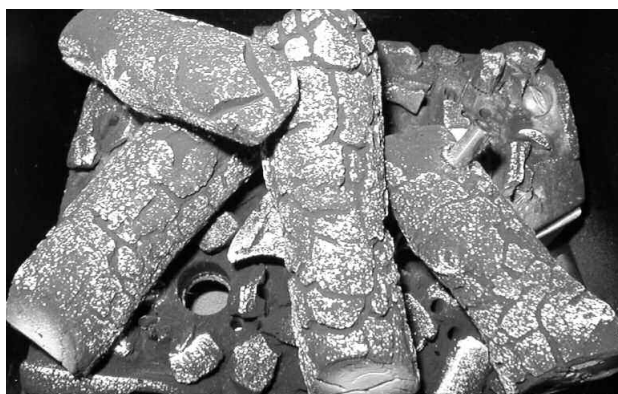


Photo #4: position of Log #4



Photo #5: position of Log #5